



Grupo industrial ESD
www.grupoesd.com



About us

We are the right choice, a one stop source with 10+ years of process production engineering with the most competitive prices and quality solutions for every single one of our clients.

Our Services



Industrial Structures



Machining



Facilities



Safety Representative

Our Services

Equipment Installation



Specialist Support by Area



Special Equipment



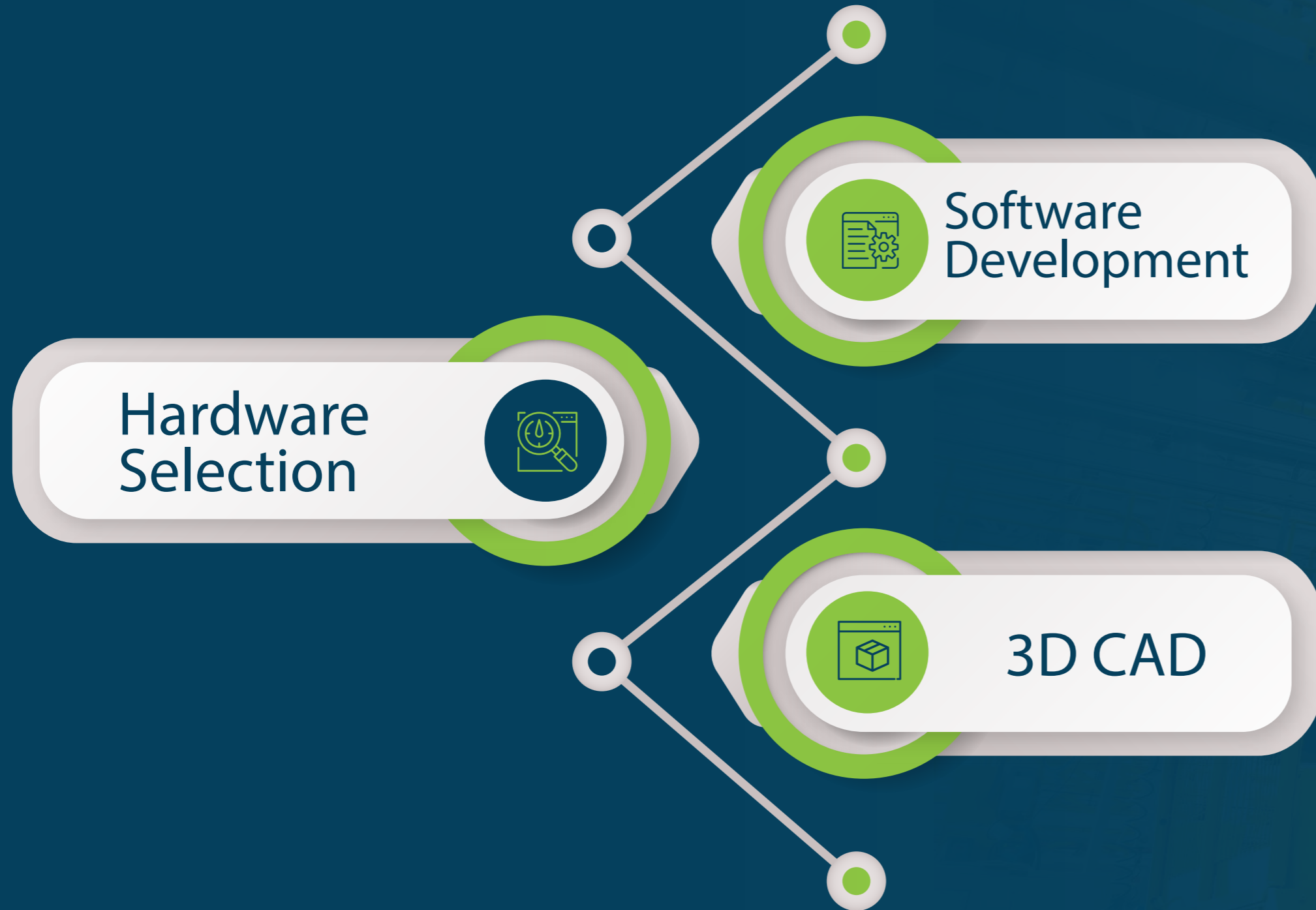
Turnkey Projects



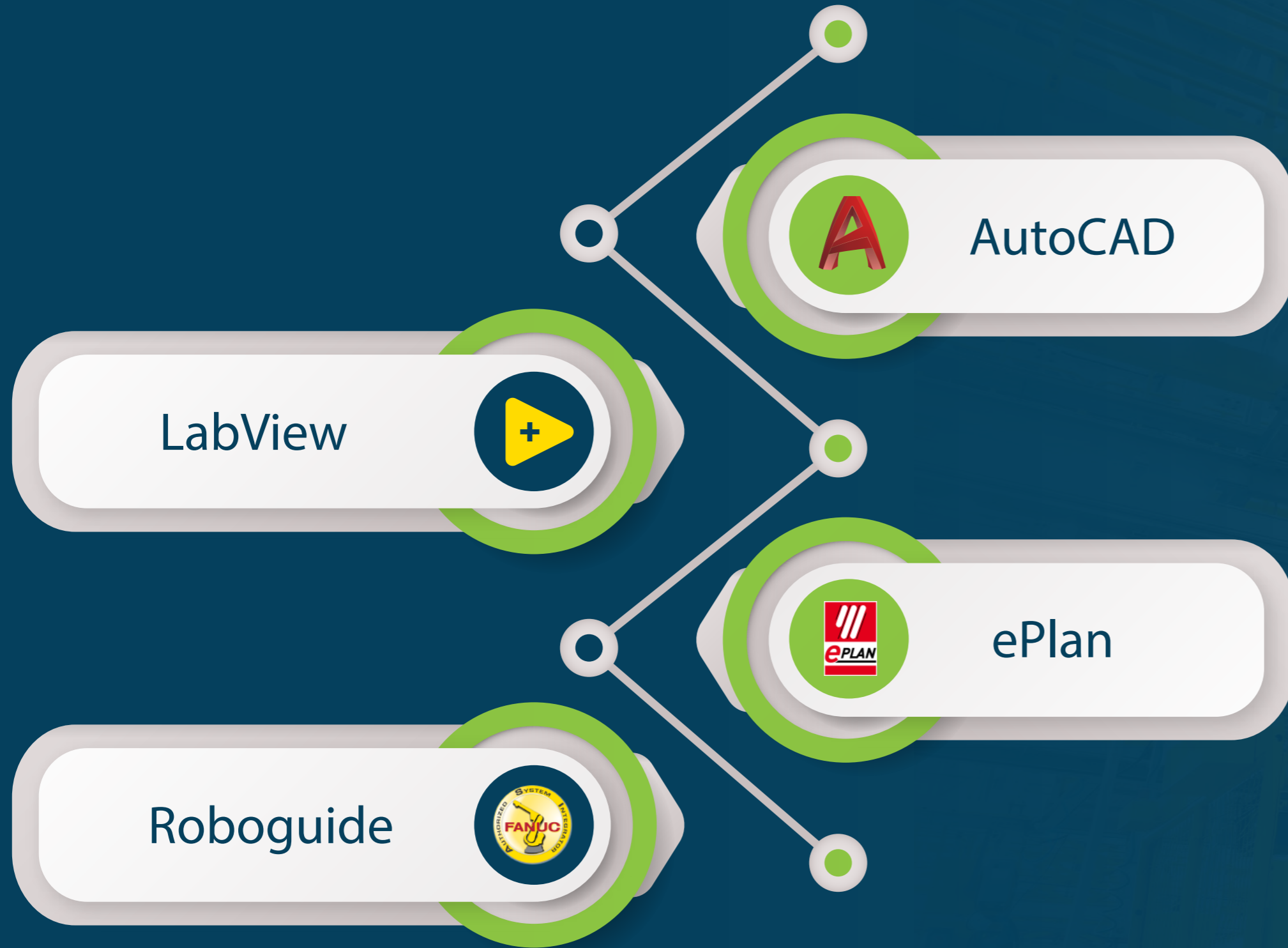
Specialized Services



Mechanical & Electrical Design



Software Planning & Design

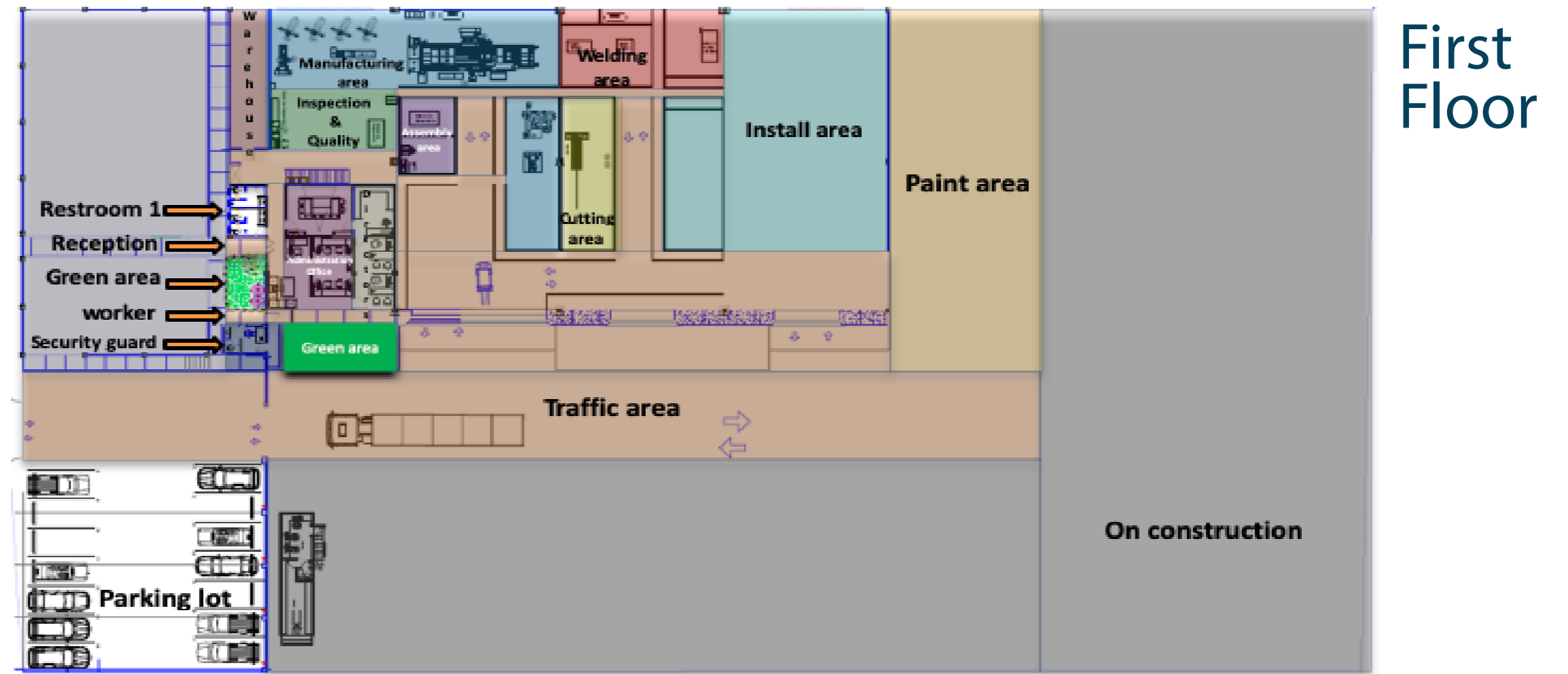


ESD Space Layout

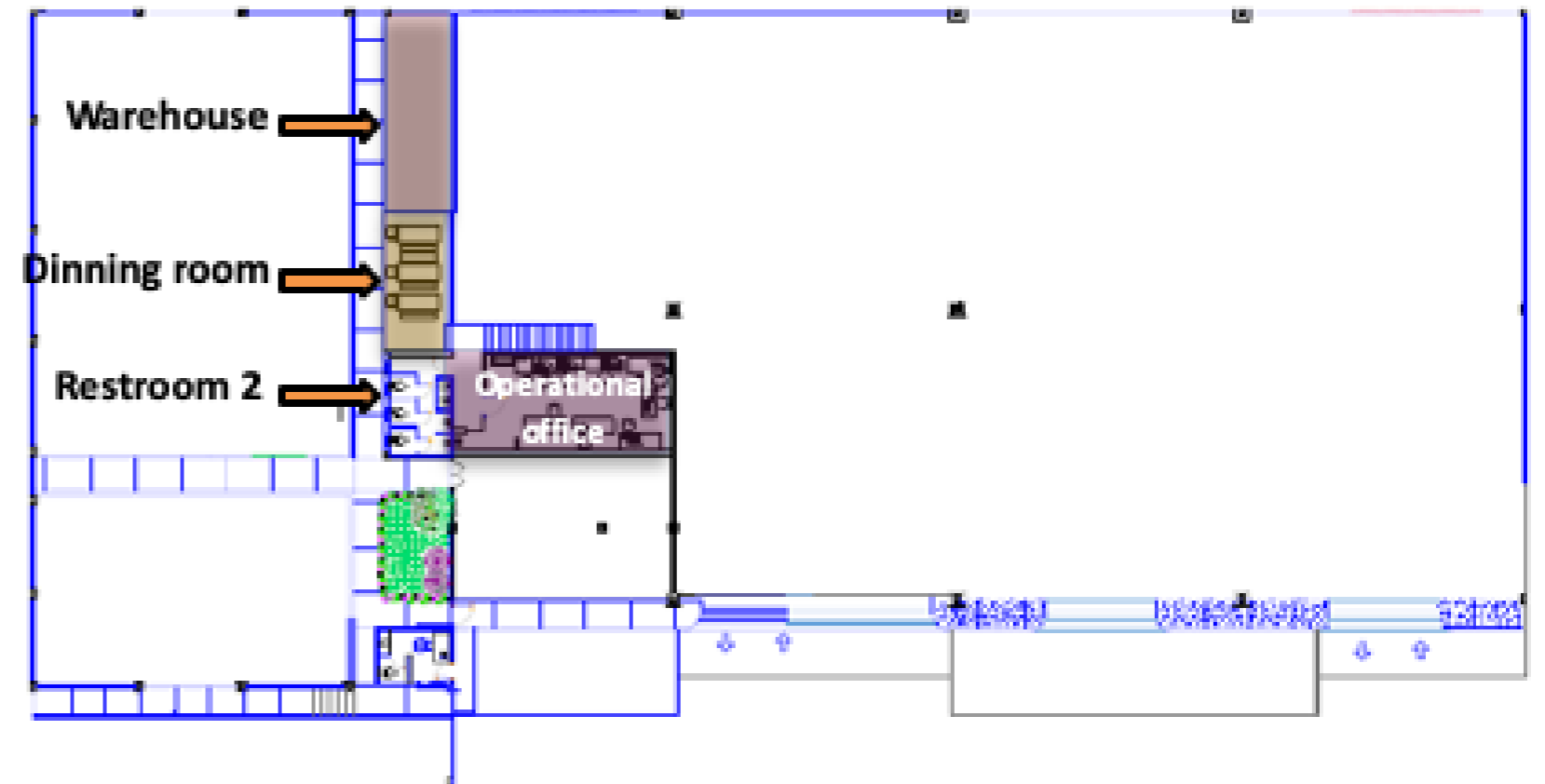
Huge project?

No problem, we have the needed spaces to fulfill it.

- Office Space: 600 m²
- Integration Floor Space: 700 m²
- Large Machining: 200 m²
- Small Machining: 150 m²
- Tooling Assembly: 300 m²
- Engineering and Controls: 300 m²



Second Floor



Capabilities

Design, Mechanical and Electrical engineering, metrology, programing and dimensional tooling adjustment.

Engineering

Mechanical 2d and 3d assembly processing, controls and electrical design, complete 3d assembly line design, complete line simulation with FANUC Robo guide and Siemens Technomatix, roboguide and ePlan.

Manpower

30 Engineers, 15 Machine Shop, 110 Tooling & Line Integration, 45 Robotics & Controls, 10 Program Managers and 20 Admin Staff

Equipment

- 6 medium vertical and horizontal CNC machining centers
- 1 large vertical and horizontal CNC machining centers
- 2 Water Jet cutting machines
- Faro arm and white light 3D measurement systems
- Weld fabrication and paint booth

Machining Capabilities

We have the best tools and equipment on the market for your needs.



Chevalier FVM-3016DCL
Payload : 6,500 kg
Capacity: X/Y/Z (mm):
3,100 x 1,600 x 780



Haas Mini Mill
16 x 12 x 10"
406 x 305 x 254 mm
7.5 hp
5.6 kw
6000 rpm



Titanium CK7130BP
Máx. turning diameter(mm): 350
Slide stroke X-axis (mm): 350
Paso de barra (mm): 36



Mitsubishi Wire EDM
15.7 x 11.8 x 8.7"
400 x 300 x 220 mm
Wire Diameter Possible: 0.004-0.012 mm
Minimum Start Hole Diameter: 0.02 mm



Haas VF-3
40 x 20 x 25'
116 x 508 x 635 mm
30 hp
22.4 kw
8100 rpm



Haas VF-2
30 x 20 x 25'
762 x 508 x 635 mm
30 hp
22.4 kw
8100 rpm

Our Facilities

Main:
Hermosillo, Sonora:
64,600 ft² (6,000 m²) Land
Main Office
14,650 ft² (1,361 m²)
Assembly Area
Inspection and Quality

Controls & Robotics:

- 6460 ft² Land
- Controls
- Robotics
- PLC
- Software Planning and Design
- Software programming

Full Machine Shop:
•4,850 ft² (450 m²)
•Full Machine Shop
•Assembly area
•Inspection & Quality

**Saltillo
office and
special
equipment
facility.**

Sales office:



Automatic Cells Products

Lorem ipsum



Integration Systems Portafolio

MIG Welding



Clinching, Piercing
and Riveting



Bushing



Spot Welding



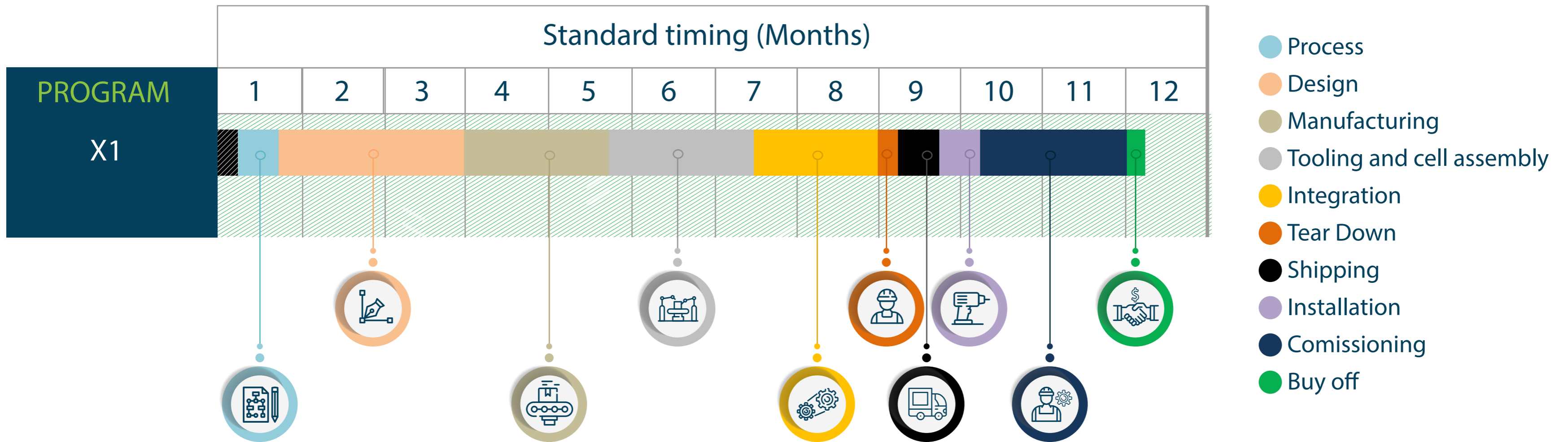
Vision Systems



Adhesive
Equipment

Laser cutting
and engraving

Project Process and Standard Timing



Main Projects



In the last 2 years we installed more than 500 robots with excellent performance and improving the timing proposal.

Getting customer satisfaction is our principal objective..

Turnkey Project

— “EV” Fender assembly cell full integration.

- 2x Robots
- Design & Process simulation
- Build & Install
- PLC
- Robotics

Facility:

Magna SFT

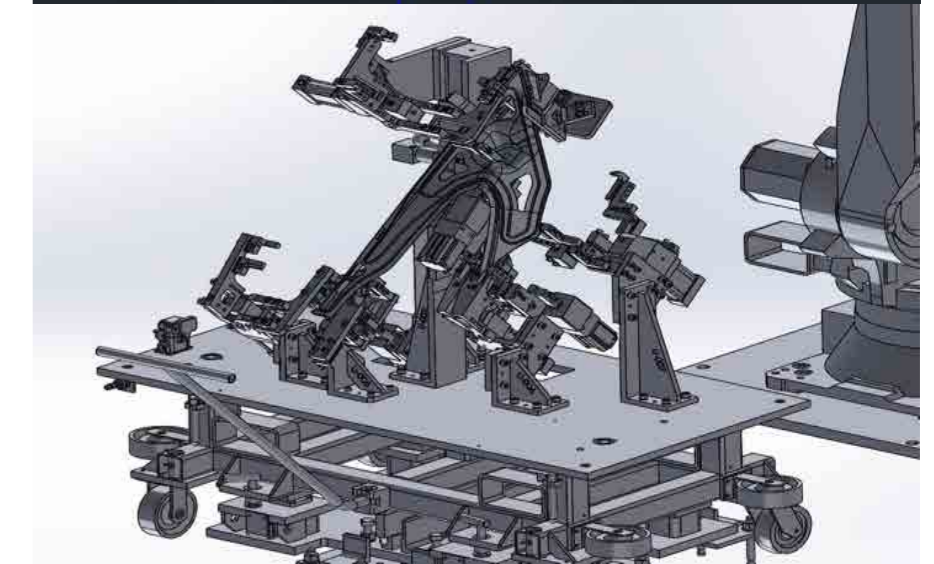
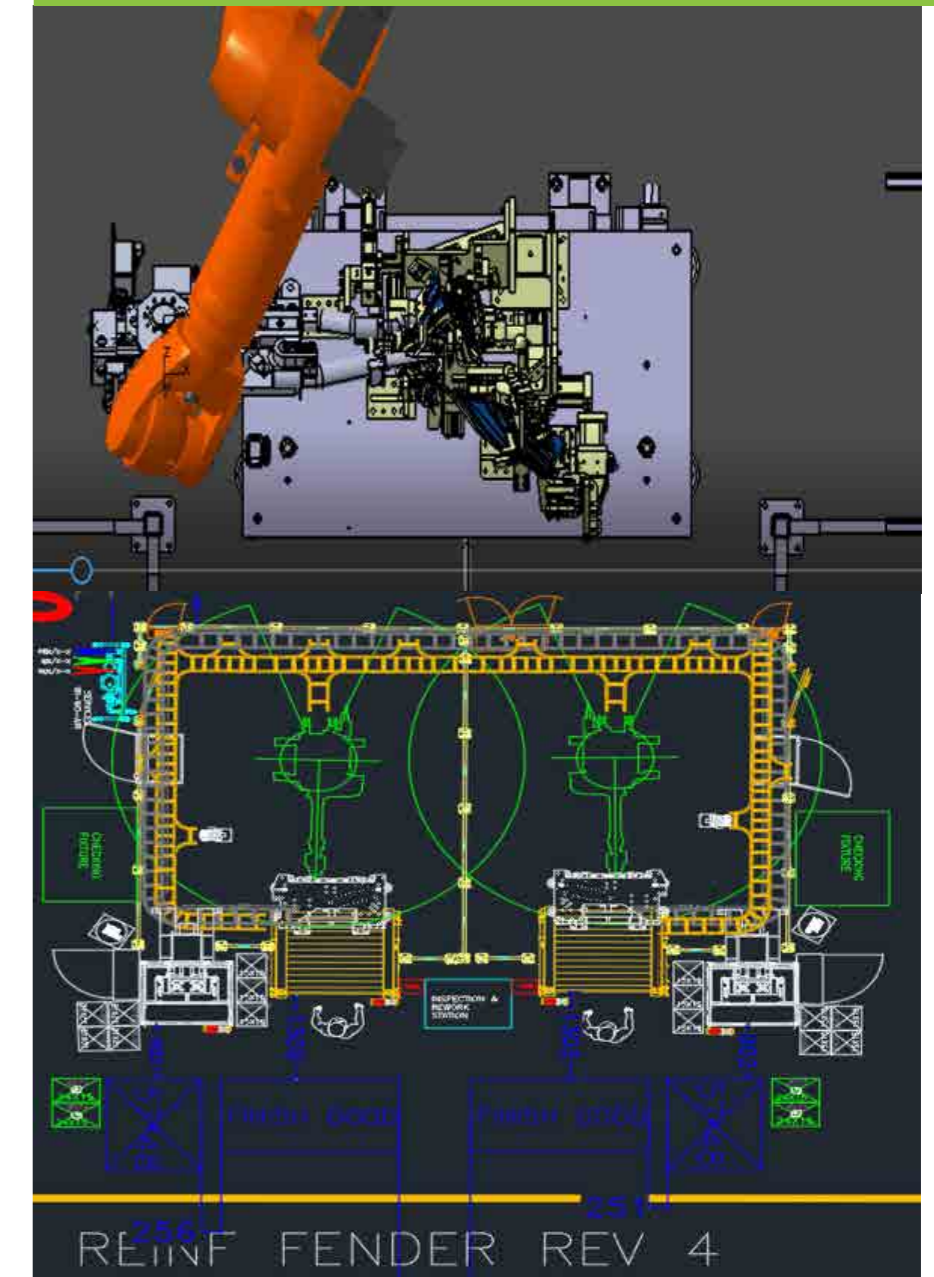
City:

Hermosillo, Sonora

Year:

2018

Project Example



Install of complete Weld (Body) Shop including main feeds

- Full install weld shop at main body (52, 750 sq ft)
 - 4x Mezzanine
 - 40x Robots
 - 18x WPP
 - 22x CDP

Facility:

Toyota Manufacturing of Mexico

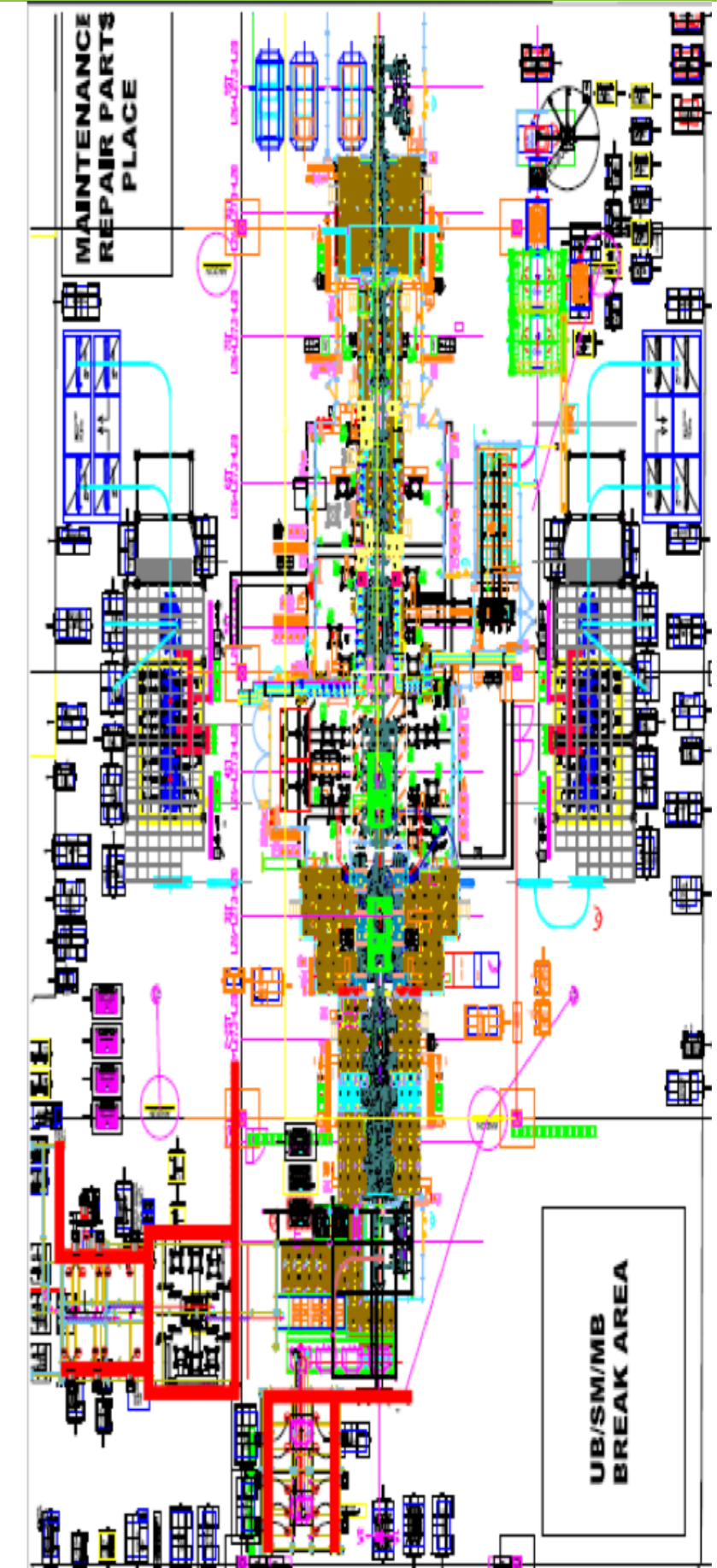
City:

Apaseo el Grande, Guanajuato

Year:

2018 – 2019 – 6 months (current)

Project Example



Install of complete Weld (Body) Shop including main feeds

- Full install weld shop at shell body (43, 000 sq ft)
 - 6x Hem Presses
 - 24x Robots
 - 12x WPP
 - 15x CDP

Facility:

Toyota Manufacturing of Mexico

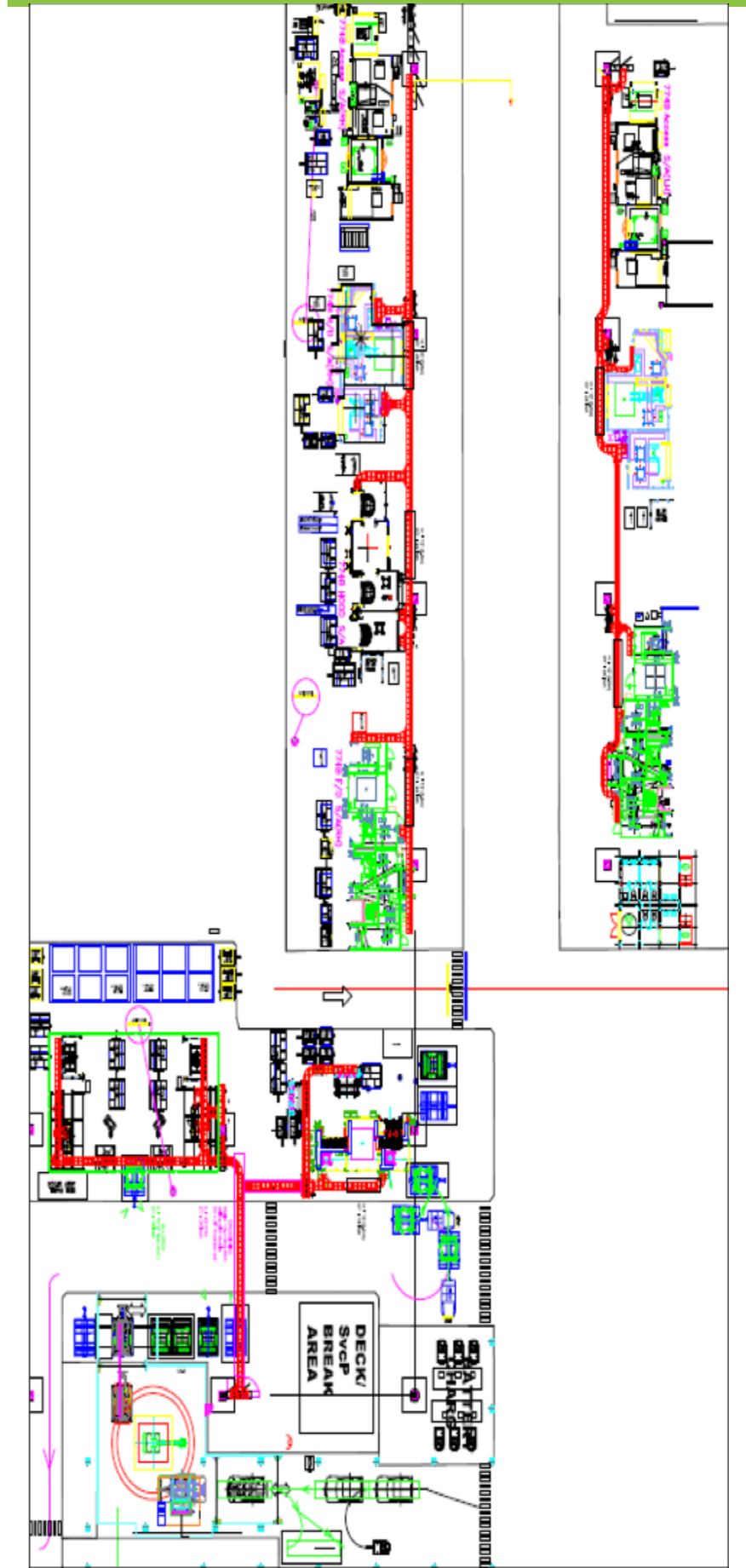
City:

Apaseo el Grande, Guanajuato

Year:

2018 – 2019 – 6 months (current)

Project Example



Ford Motor Company

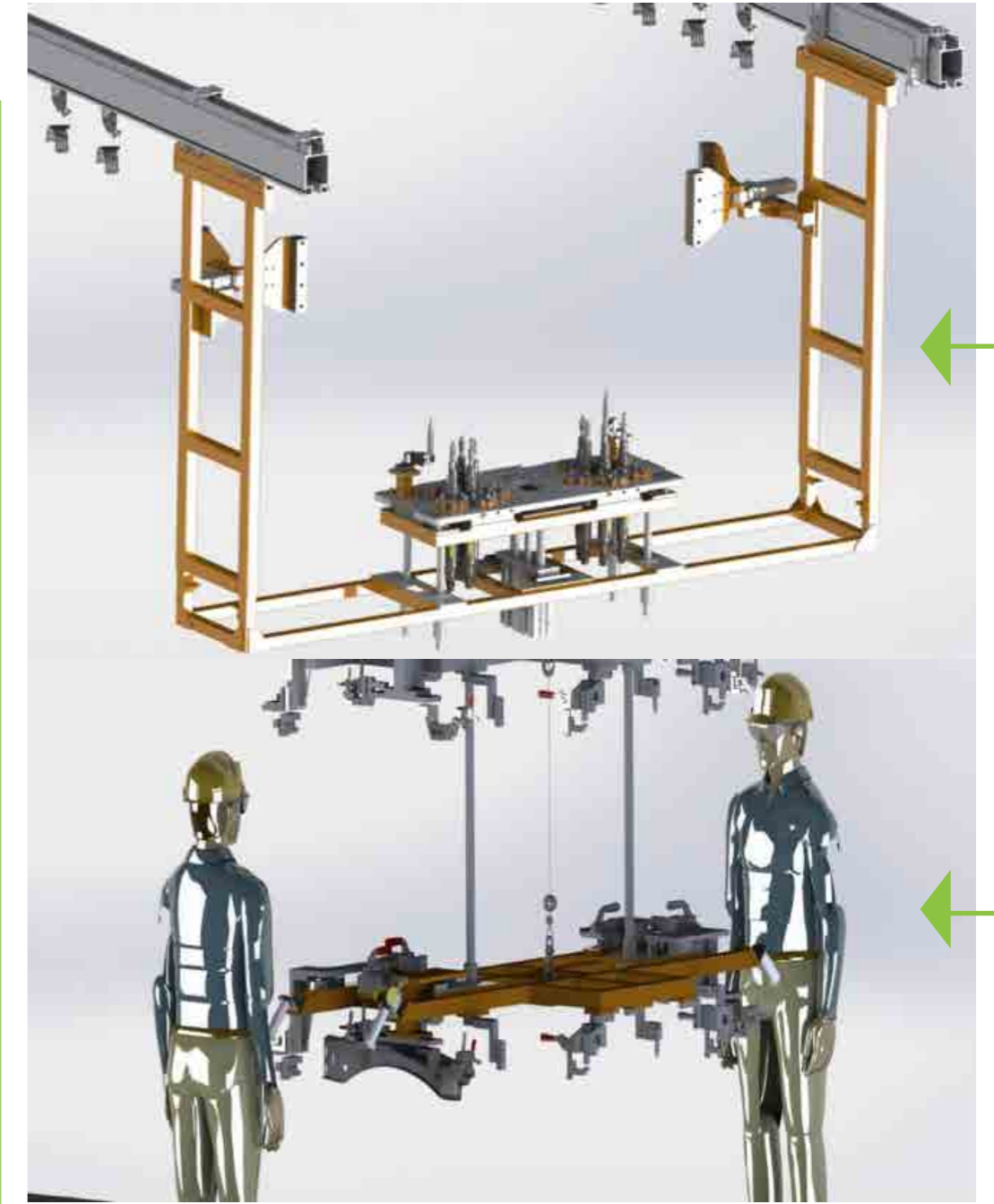
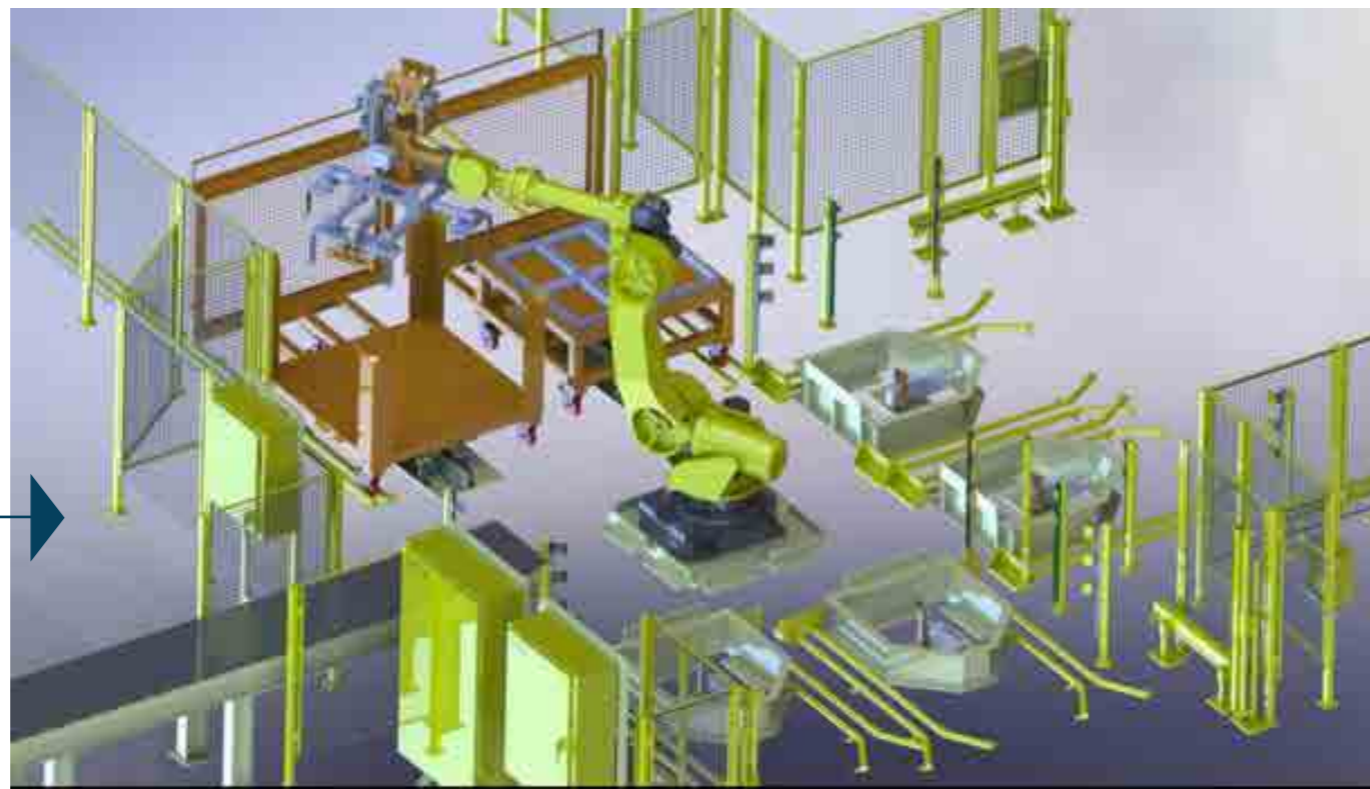
Design & automation

Automatic Fixture to install Rear Suspension

Goal was to change from manual operation to be fully automated.

Battery load and Unload cell

Goal was to change from manual operation to be fully automated.



Why ESD?

Because we're the leaders on offering a complete solution to your project, working with creativity, flexibility, adaptability and skilled people.

Our Advantage

- ✓ Expertise from drawing to integration
- ✓ One stop shopping solution with 10+ years of process production engineering with a very competitive cost
- ✓ Extensive background for ergonomics tooling specialized on High Tech and low cost tooling solutions
- ✓ Fast answer at your requirements.
- ✓ Qualify and experience people to warranty the results.
- ✓ Best solutions.

Sales contact

Representatives

Fernando Fuentes 

+52 (844)8 69 22 06 

fernandofuentes@gruposd.com 

 Diego Cacho

 +52 (662)2 68 79 19

+52 (662)3 19 02 84


 diegocacho@gruposd.com

Luis Villarreal 

+52 (844)3 11 52 42 

luisvillarreal@gruposd.com 

 Rafael Ordoñez

 +52 (222)1 83 84 30

 rafaelordonez@gruposd.com

THANKS FOR YOUR CONFIDENT.

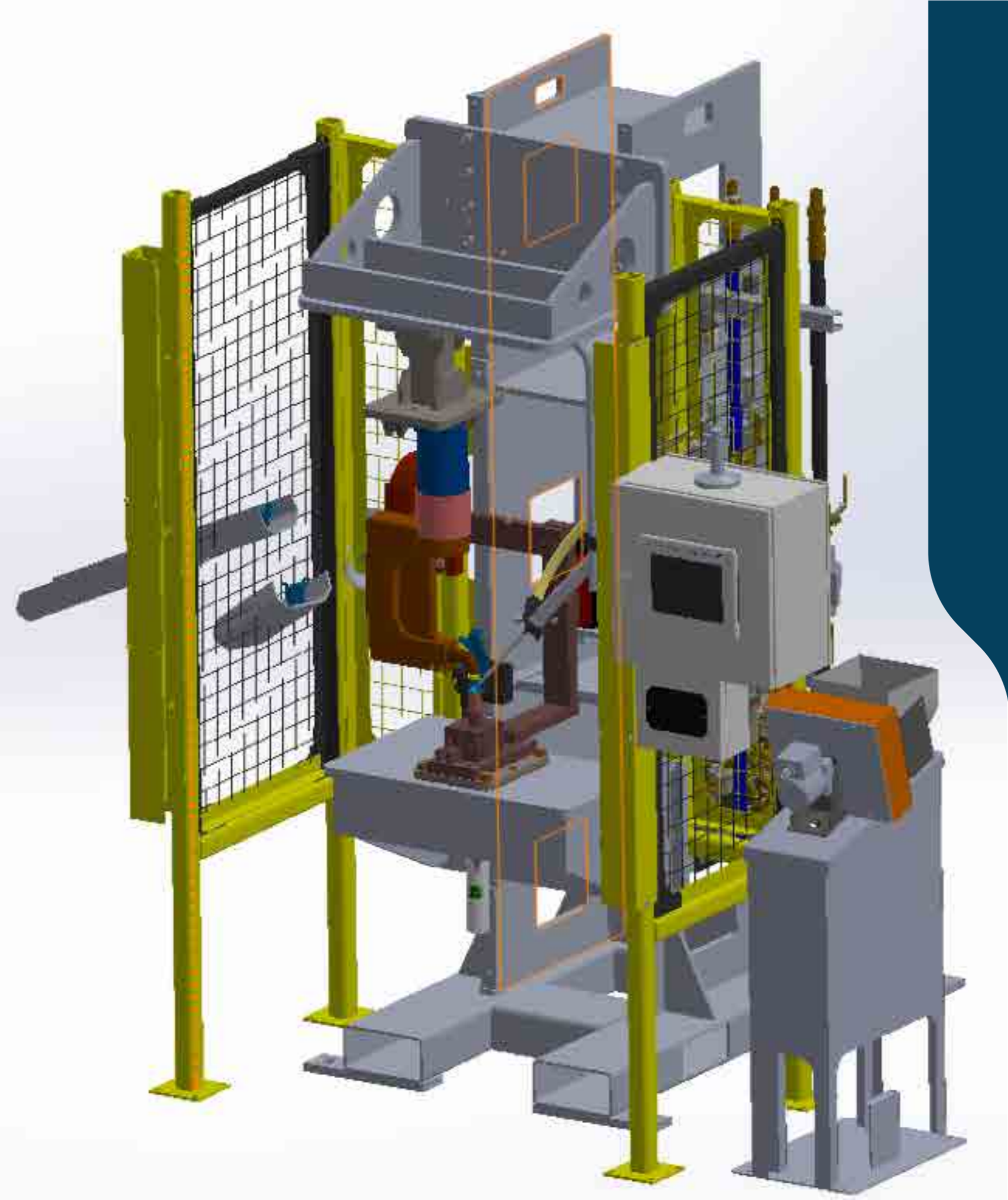


www.gruposd.com

Our Clients



Design & automation



Design & automation

